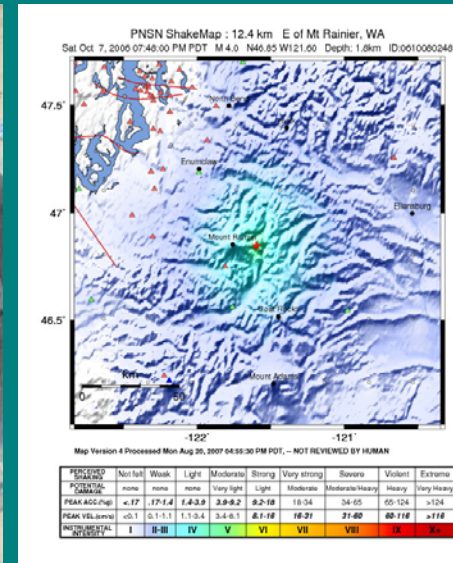
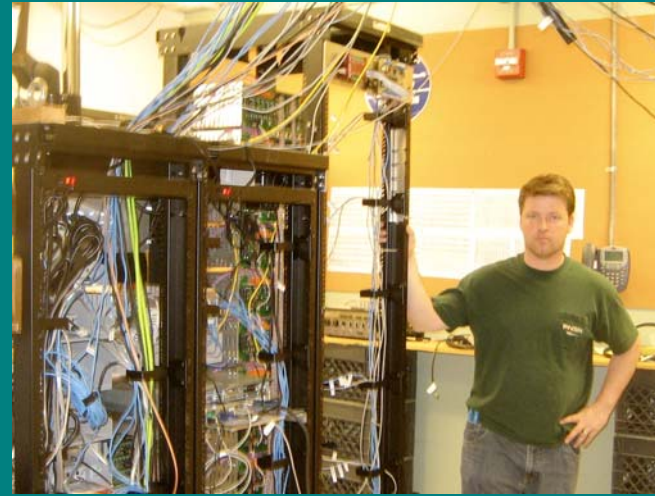


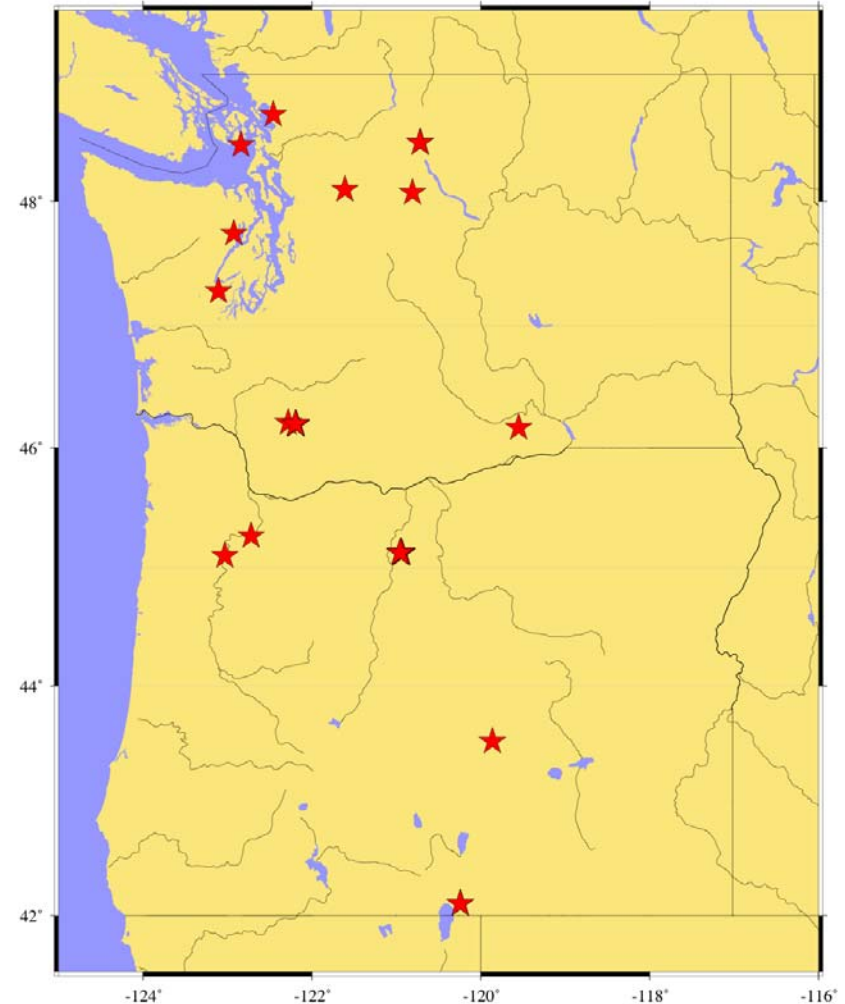
# Current PNSN Status

- Bottom Line
- Finances
- Stations
- Personnel
- Challenges



# Bottom Line

- Strong
- Highly visible
  - (3739 requests, 175.5 GB; 326,242 waveforms in 1st 3 months of '08)
  - ETS
- Poised to undertake 2 strategic upgrades
  - US Array inclusion
  - ANSS software (EW8)
- Planning for challenges ahead



# Finances

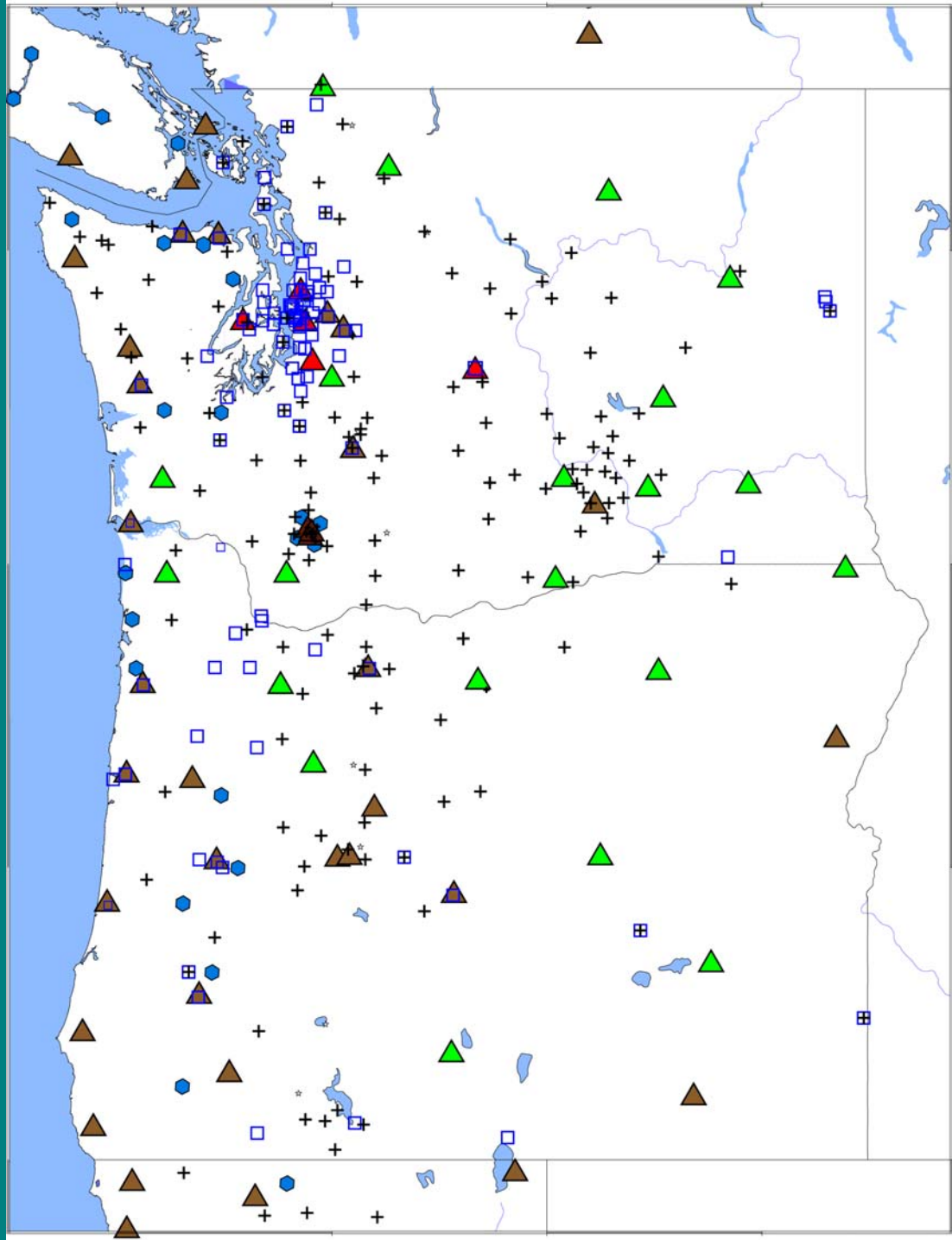
- Total annual ~\$1.4M
- Complex
- “1-timers”
  - ANSS multihazard
  - Murdock
  - DOGAMI
- ANSS share shrinking
- Costs rising
  - Travel, Commodities
  - Communications
  - Personnel
- VHP adds student support

QuickTime™ and a  
decompressor  
are needed to see this picture.

# Stations

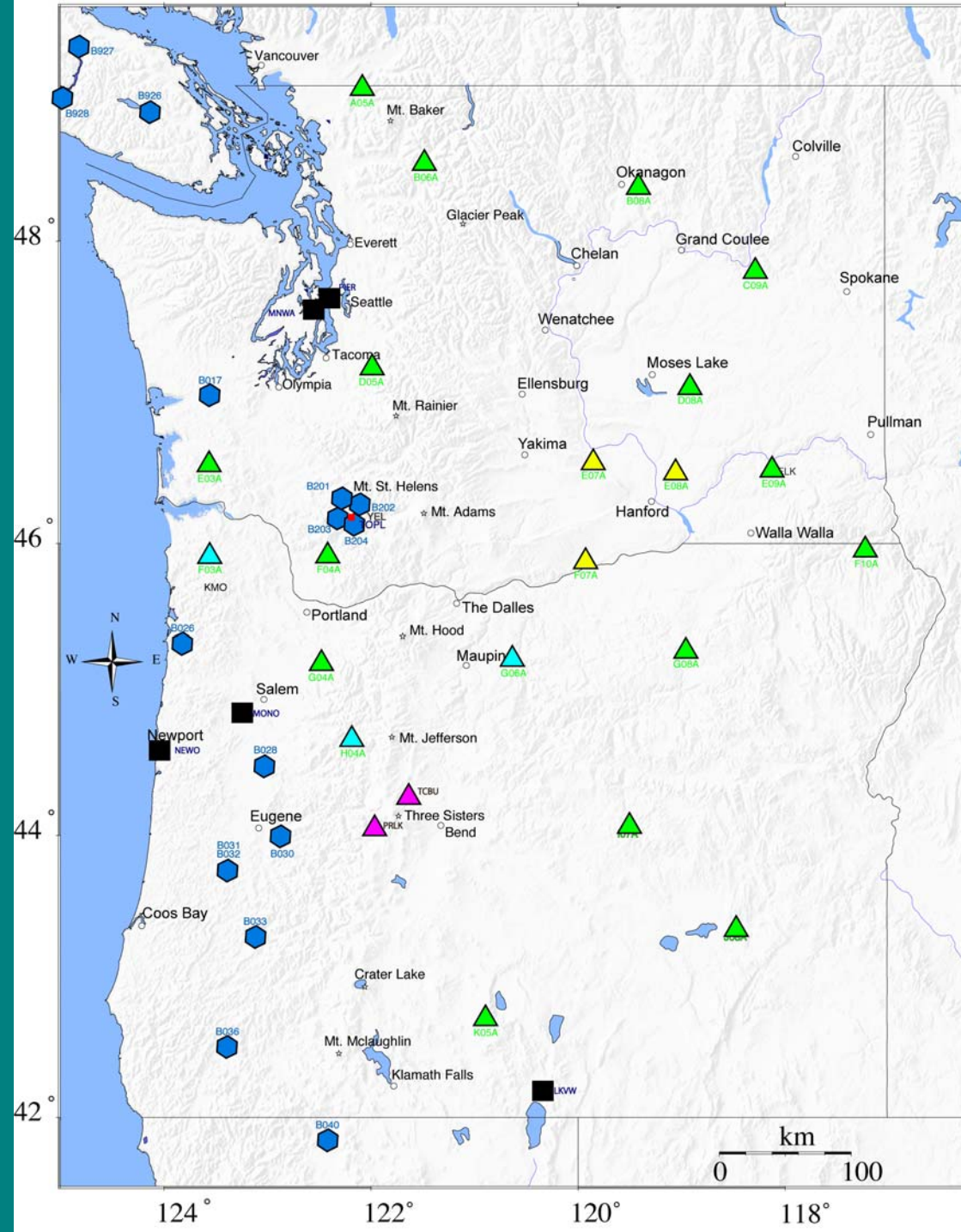
- ~750 Channels
  - (incl. imports!)
- TAs leaving
- PBOs added

Triangles = BB  
Boxes = SMO  
Crosses = SPZ  
Pentagons = 3d SP boreholes



# New Stations

- 21 TA Broadbands
  - 3 Battelle/Hanford
  - 3 Oregon (DOGAMI)
- New CVO @ Sisters
- 6 ANSS SMO
- PBO Boreholes
- (+NSMP Dial-ups)

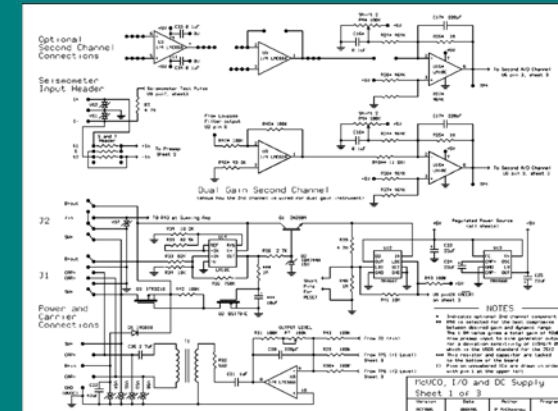
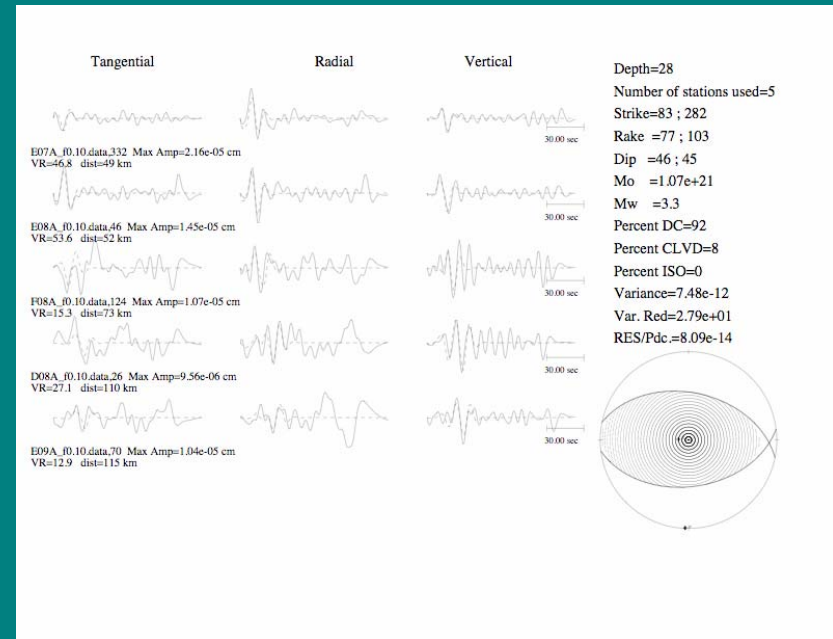


# Personnel

- Field/Lab Techs
  - P. McChesney, K. Hagel, B. Dukellis, J. Connolly(1/2), L. Simmons (USGS contract), B. Norris (1/2) (USGS), the “Gorillas”.
- Analysts
  - A. Wright (+ Duty Seismologists)
  - (grad students) W. Thelen, A. Delorey, M. Nichols
- Computer Systems & Software
  - T. Bartlett
  - R. Hartog, V. Kress
  - The “Brain Trust” (S. Malone, B. Crosson, E. Mulligan)
- Public interface, E&O, Lab management
  - B. Steele, J. Connolly(1/2)
- Management
  - J. Vidale (25%), P. Bodin (18%), T. Yelin (USGS).

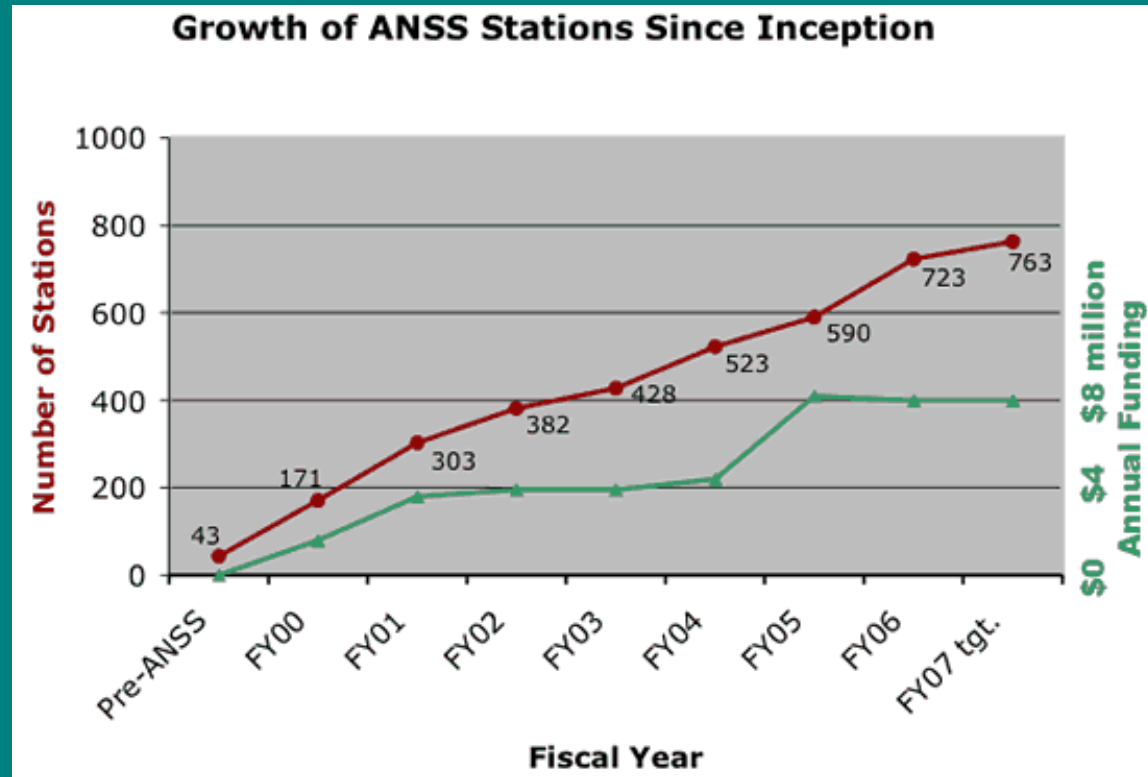
# Advances

- Lab Reorganization
- New Hardware
  - Computers
  - Analog telemetry rack
  - 6-station portable bb network
- ShakeMap Advances
- Moment Tensors
- NSMP Dataflow (?)
- Archiving All Channels at DMC
- Communications with Regional EMAs



# Challenges & Opportunities

- Flat ANSS funding
- Tsunami program
- EarthScope--hello & goodbye
- EarthWorm8!
- NSMP changes
- Telemetry
- Resilience&Robustness
- Earth Hazards Initiative
- Changes at EMD





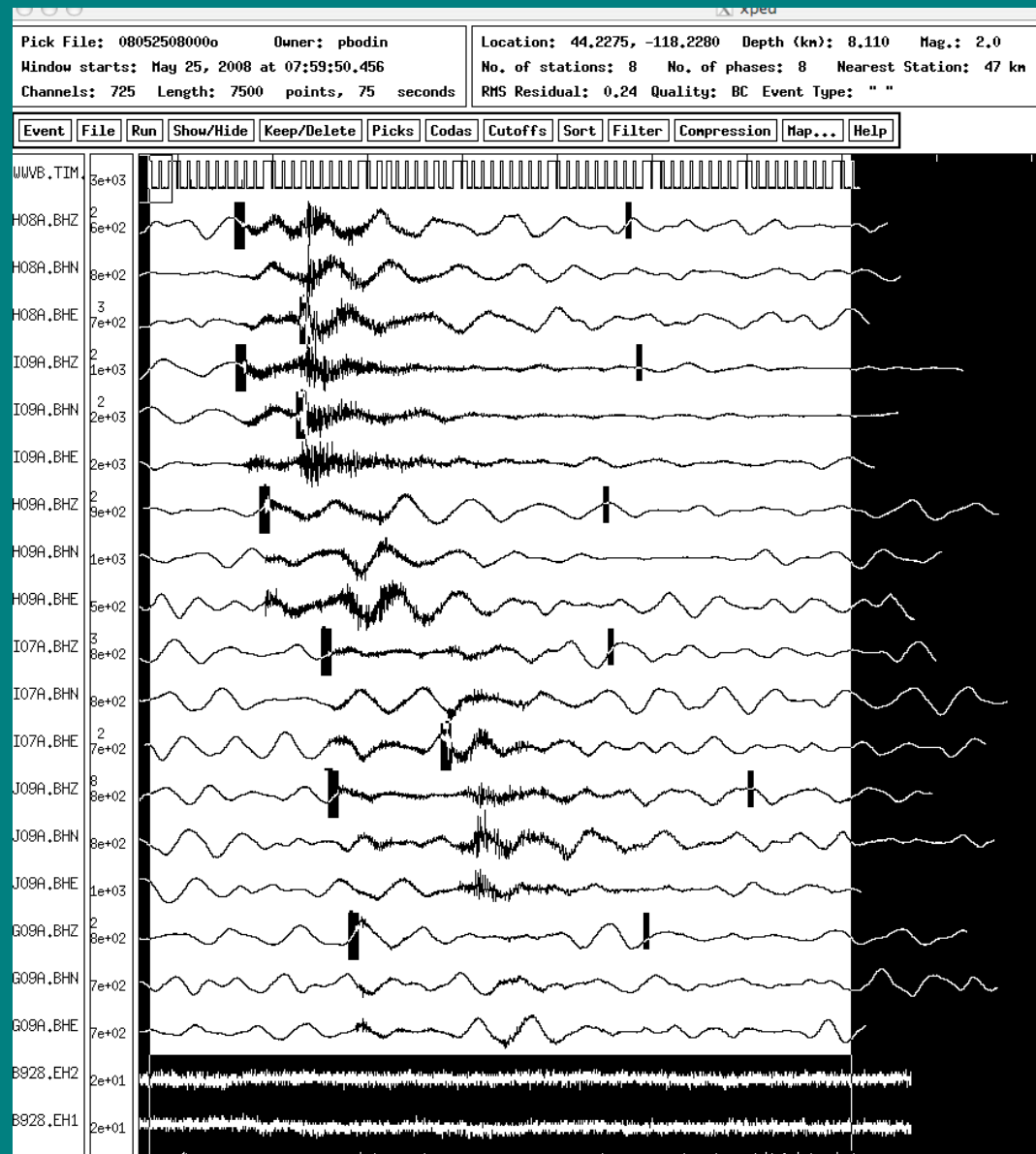
# Challenges & Opportunities

- Flat ANSS funding
- Tsunami program
- EarthScope--hello & goodbye
- EarthWorm8!
- NSMP changes
- Telemetry
- Resilience&Robustness
- Earth Hazards Initiative
- Changes at EMD



# Challenges & Opportunities

- Flat ANSS funding
- Tsunami program
- EarthScope--hello & goodbye
- EarthWorm8!
- NSMP changes
- Telemetry
- Resilience&Robustness
- Earth Hazards Initiative
- Changes at EMD



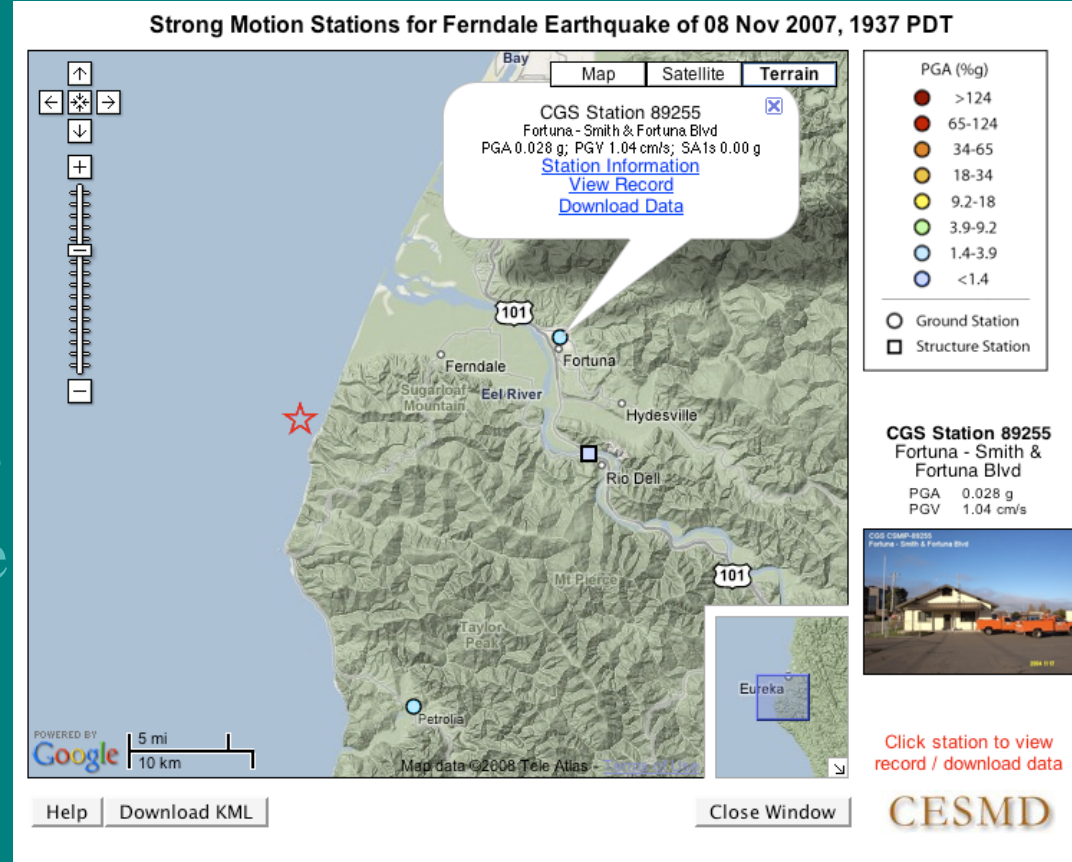
# Challenges & Opportunities

- Flat ANSS funding
- Tsunami program
- EarthScope--hello & goodbye
- EarthWorm8
- NSMP changes
- Telemetry
- Resilience & Robustness
- Earth Hazards Initiative
- Changes at EMD



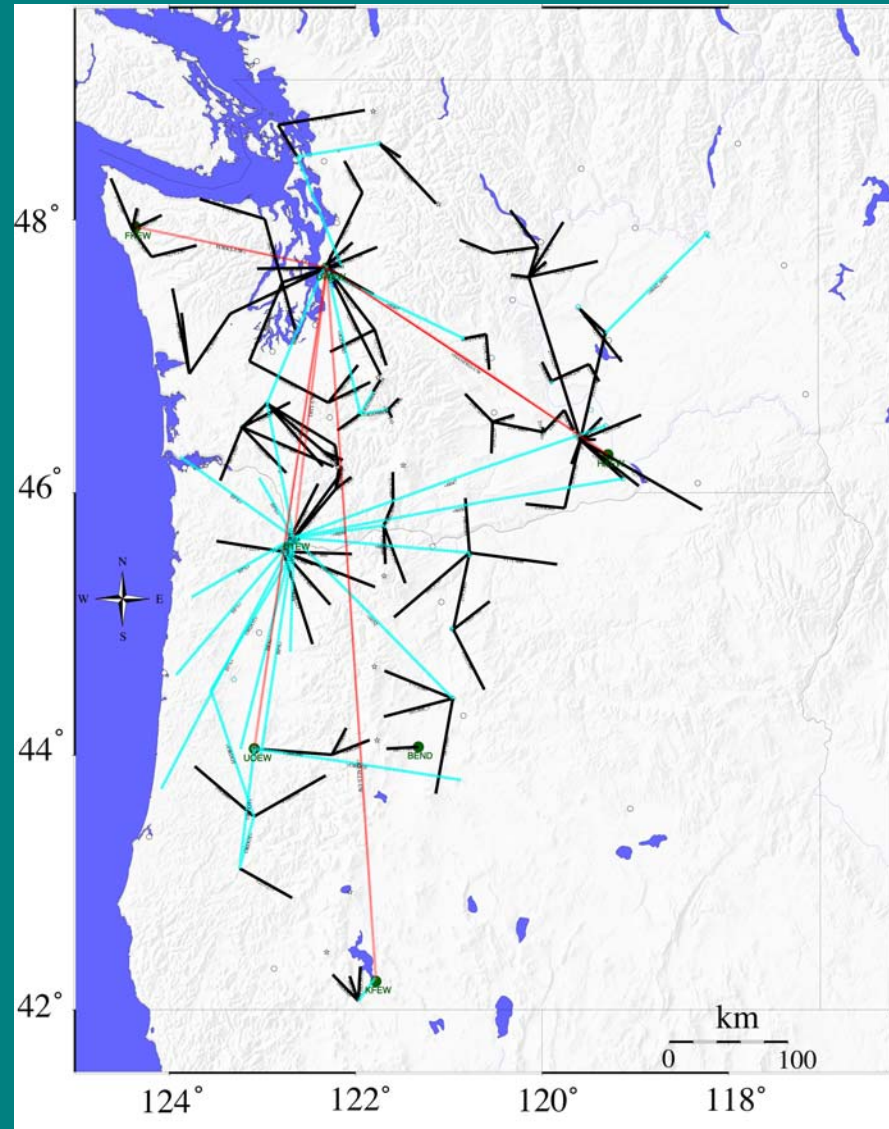
# Challenges & Opportunities

- Flat ANSS funding
- Tsunami program
- EarthScope--hello & goodbye
- EarthWorm8!
- NSMP changes
- Telemetry
- Resilience&Robustness
- Earth Hazards Initiative
- Changes at EMD



# Challenges & Opportunities

- Flat ANSS funding
- Tsunami program
- EarthScope--hello & goodbye
- EarthWorm8!
- NSMP changes
- Telemetry
- Resilience&Robustness
- Earth Hazards Initiative
- Changes at EMD



# Challenges & Opportunities

- Flat ANSS funding
- Tsunami program
- EarthScope--hello & goodbye
- EarthWorm8!
- NSMP changes
- Telemetry
- **Resilience&Robustness**
- Earth Hazards Initiative
- Changes at EMD



# Challenges & Opportunities

- Flat ANSS funding
- Tsunami program
- EarthScope--hello & goodbye
- EarthWorm8!
- NSMP changes
- Telemetry
- Resilience&Robustness
- Earth Hazards Initiative
- Changes at EMD

